

Idaho EPSCoR Annual Meeting 2020

*Linking Genome to Phenome to Predict Adaptive Responses of
Organisms to Changing Landscapes (GEM3)*

OIA-1757324

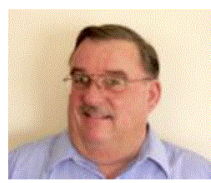
Welcome



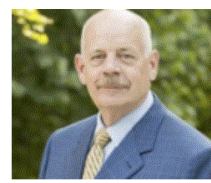
Idaho Statewide EPSCoR Committee



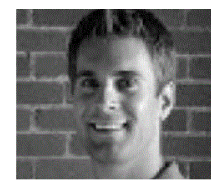
Laird Noh, Chairman
President of Noh Sheep
Company; Idaho State Senator
(retired)



David Barneby
Vice-President of Nevada
Power and Sierra Pacific
Power Companies (retired)



Harold Blackman
Interim Vice-President for
Research and Economic
Development, Boise State
University



Matthew J. Borud
Chief Business Development
Officer, Idaho Department of
Commerce



Marianne Walck
Chief Research
Officer, Idaho
National Lab



Gynii Gilliam
President of Jobs Plus Inc.



Doyle Jacklin
Partner, Riverbend Commerce
Park



Laurie Lickley
Idaho State Representative



Donna Lybecker
Acting Vice President for
Research, Idaho State
University



Christopher Nomura
Vice President of Research &
Economic Development,
University of Idaho



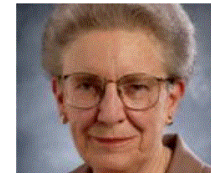
Mark Nye
Idaho State Senator



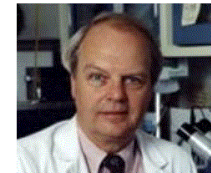
Skip Oppenheimer
Chairman/CEO of
Oppenheimer Companies, Inc.



Leo Ray
President of Fish Breeders of
Idaho, Inc.



Jean'ne Shreeve
Professor of Chemistry,
University of Idaho



Dennis Stevens
Chief of Research and
Development, Infectious
Disease Section, Veterans
Affairs Medical Center



David Tuthill Jr.
Founder of Idaho Water
Engineering, LLC.



Greg Wilson
Senior Policy Advisor,
Governor's Office



GEM₃ Project Advisory Board (PAB)



**Anna
Waldron**



**Erik
Goodman**



**Camille
Parmesan**



**Michael
Khonsari**



Clif Dahm



**Christine
Ortiz**



**Jason
Dunham**

GEM₃ Statewide Data Manager - NKN



Andrew Child

Agenda

8:00 PT Welcome (A. Kliskey)

8:15 GEM3 Research Accomplishments and Priorities (A. Kliskey, et al.)

9:15 Broadening Participation

10:00 A. Live Virtual Poster Session

11:00 B. Live Virtual Poster Session

12:15 Working Group: Modeling

2:00 A. Project Advisory Board
B. Professional Development

4:00 Adjourn

Day 1

8:00 PT Opening Remarks (A. Kliskey)

8:15 Keynote: "Forecasting a Better Future for Earth," Dr. Mark Urban, Professor, University of Connecticut

9:00 Q&A

9:30 Concurrent Breakout Sessions:
A. Limits of Forecasting (C. Baxt)
B. JEDI Themes (M. Burnham)
C. Disciplinary Integration (K. Gr

10:30 A. Working Group: GEM3 WFD and
B. Brainstorming Collaborative P

12:15 Break

1:00 A. Live Virtual Poster Session (se

2:00 B. Live Virtual Poster Session (se

3:00 Adjourn

Day 2

8:00 PT Opening Remarks (A. Kliskey)

8:15 Working Group: Scenarios Working Group (D. Cronan)

10:00 Working Group: Sage-Trout Integration (J. Forbey & C. Caudill)

11:45 Plenary: Seed Funding update, GEM3 Priorities and Next Steps (A. Kliskey, et al.)

12:15 Presentation of the Jean'ne M. Shreeve Research Excellence Award (D. Jacklin)

12:30 Concurrent Activities

A. PAB Meeting (closed)
B. Idaho EPSCoR Committee meeting (Committee Members and invited)
C. Working Group: Social Ecological Systems (Burnham & Hopping)

2:15 Adjourn by 2:15 pm PT

Day 3



Purpose of 2020 GEM3 Annual Meeting

- Collaboration
- Status updates
- Working meeting – working group sessions