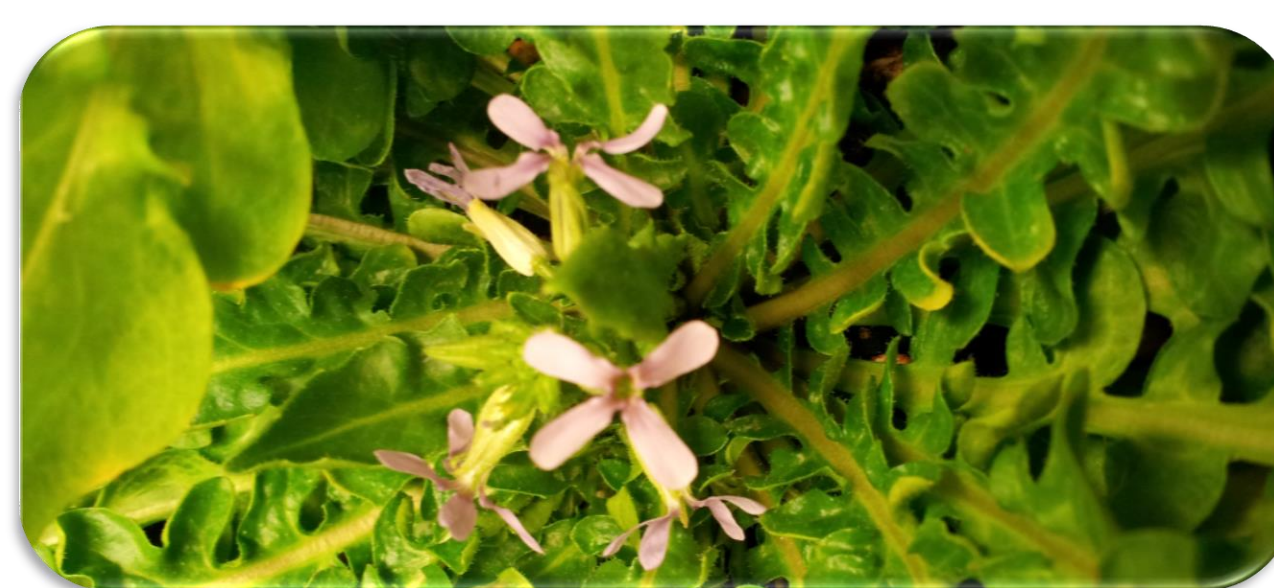
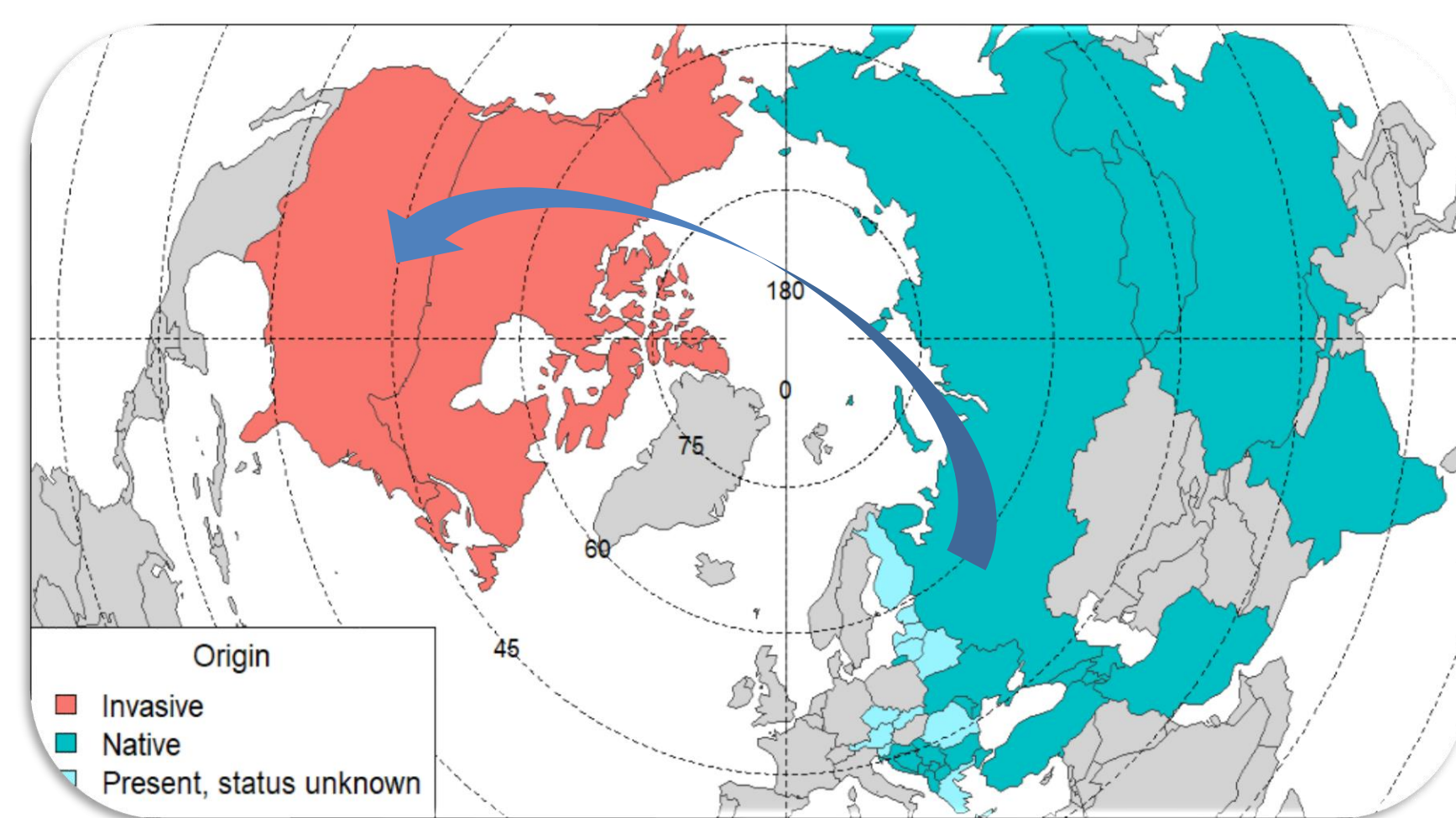
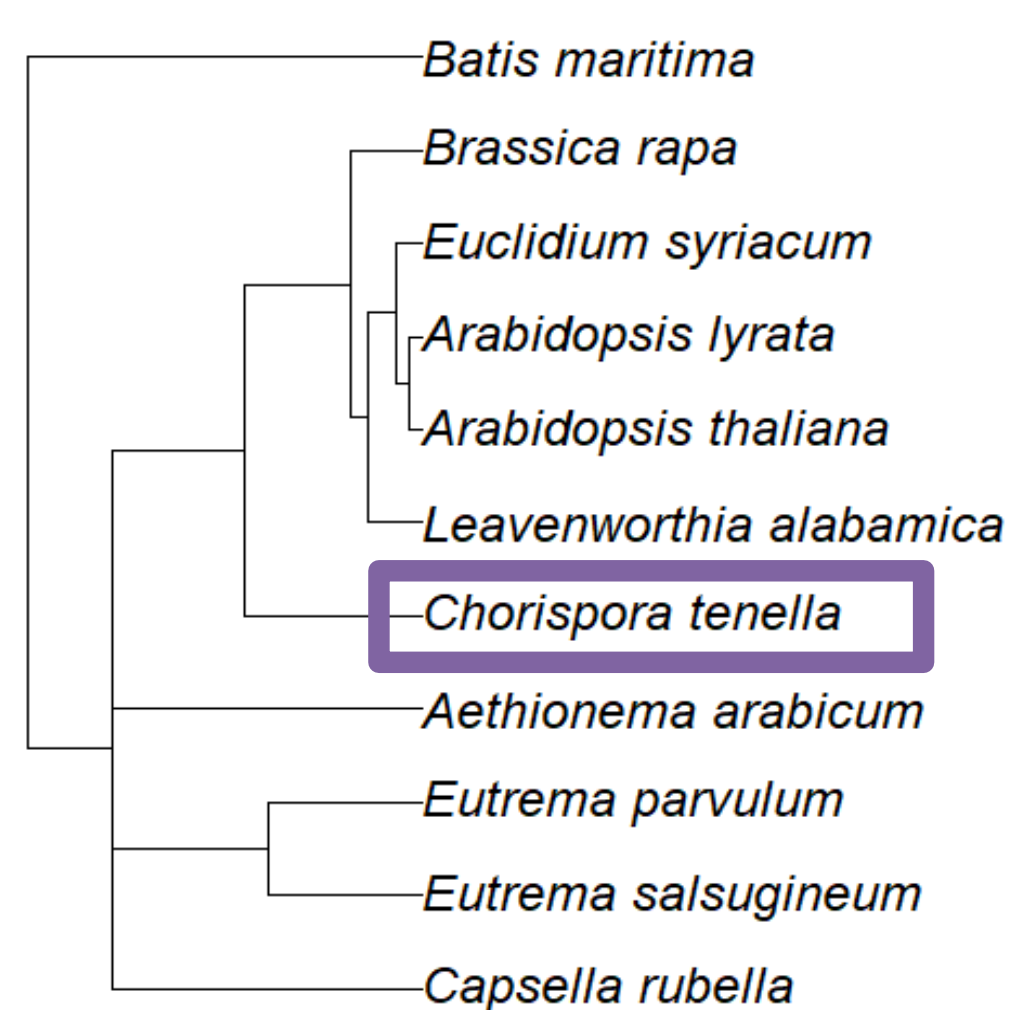


Historic evidence of adaptation to novel environments...

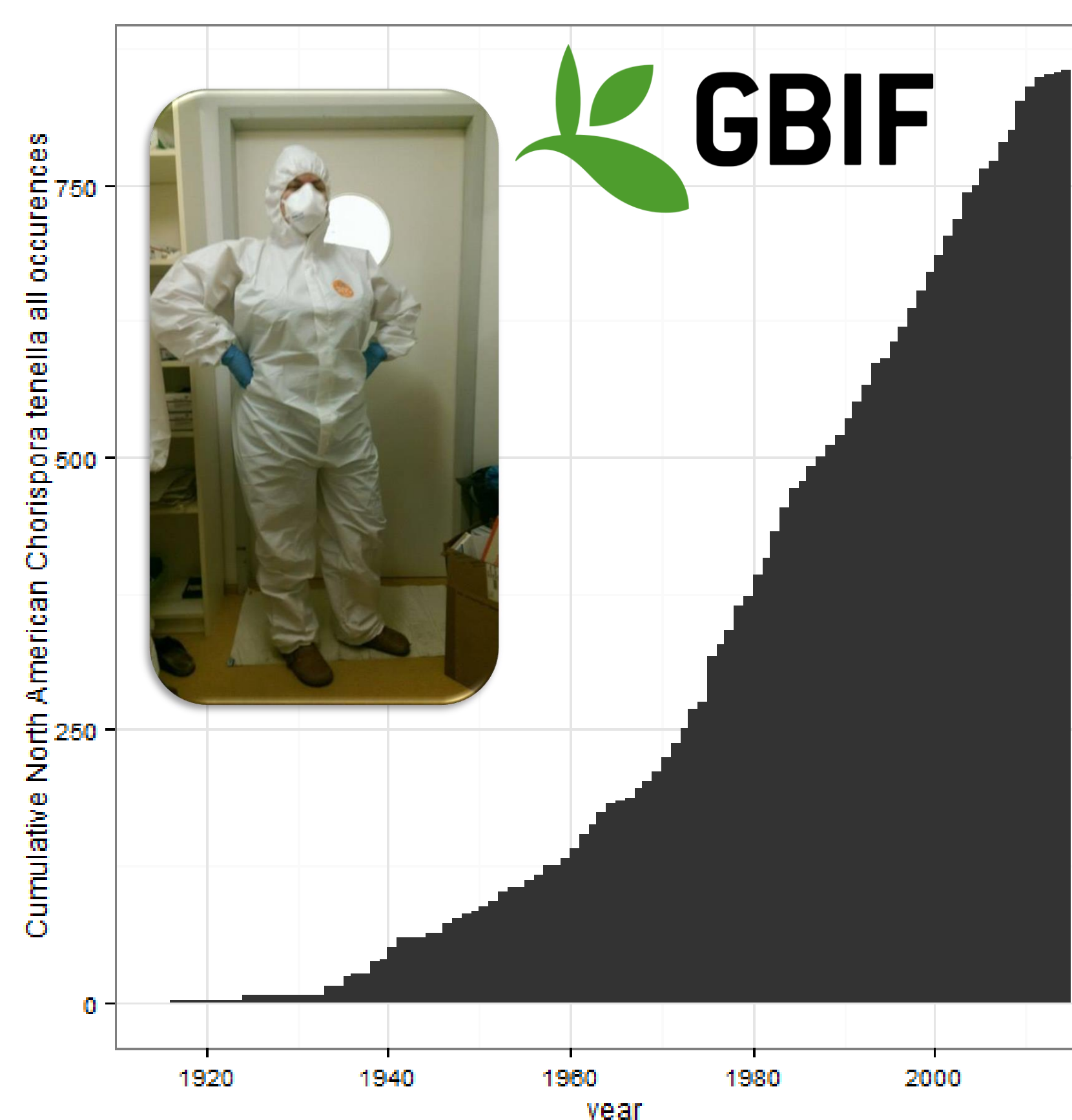
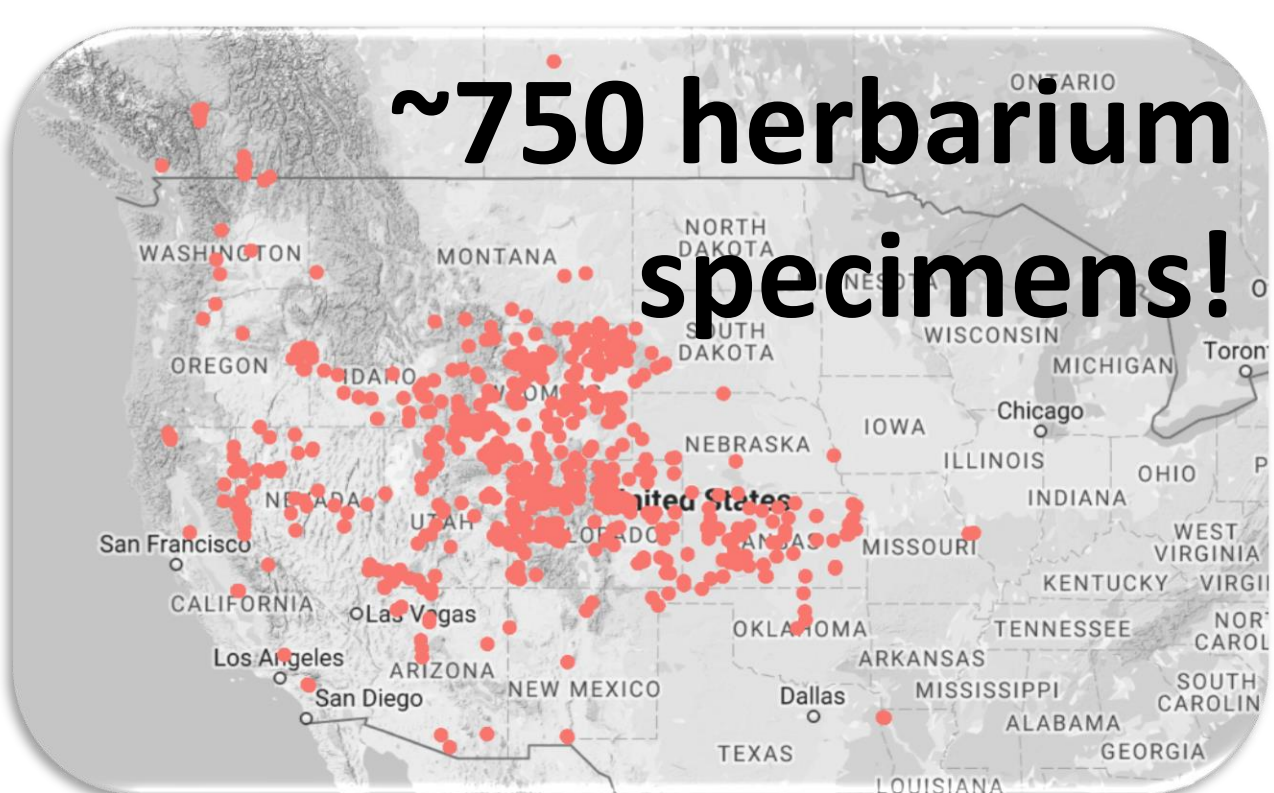
Kathryn G Turner^{1,2}, Rafal Gutaker³, Hernán Burbano³, Ruth Hufbauer⁴, John McKay⁴, Laura Weyrich², Carolee Bull², George Perry², Jesse Lasky²
¹Idaho State University, Pocatello, ID, USA; ²Pennsylvania State University, State College, PA, USA; ³Max Planck Institute for Developmental Biology, Tübingen, Germany; ⁴Colorado State University, Fort Collins, CO, USA

Join the Turner Lab at Idaho State University!

...in an invader, *Chorispora tenella*



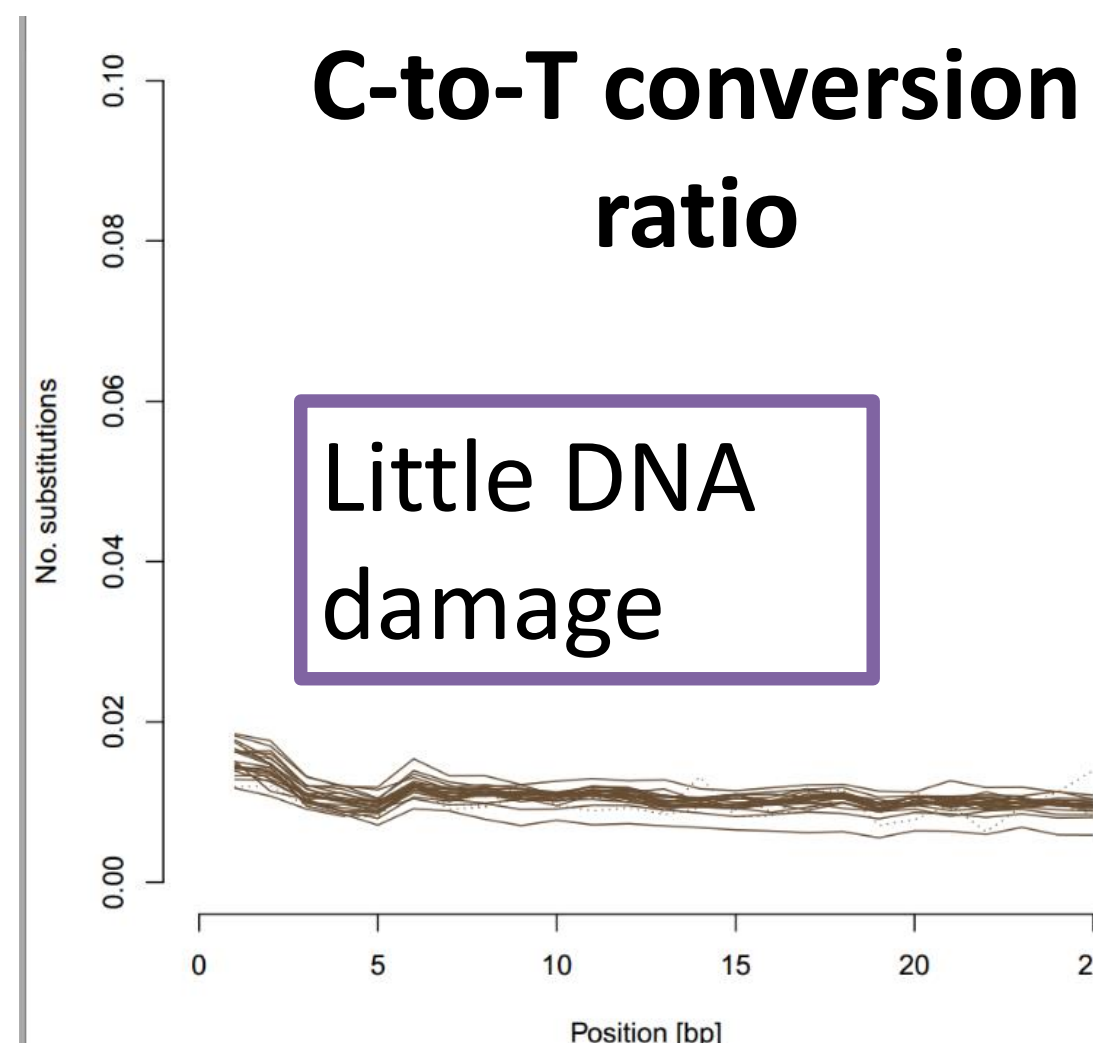
Contemporary reference genome!



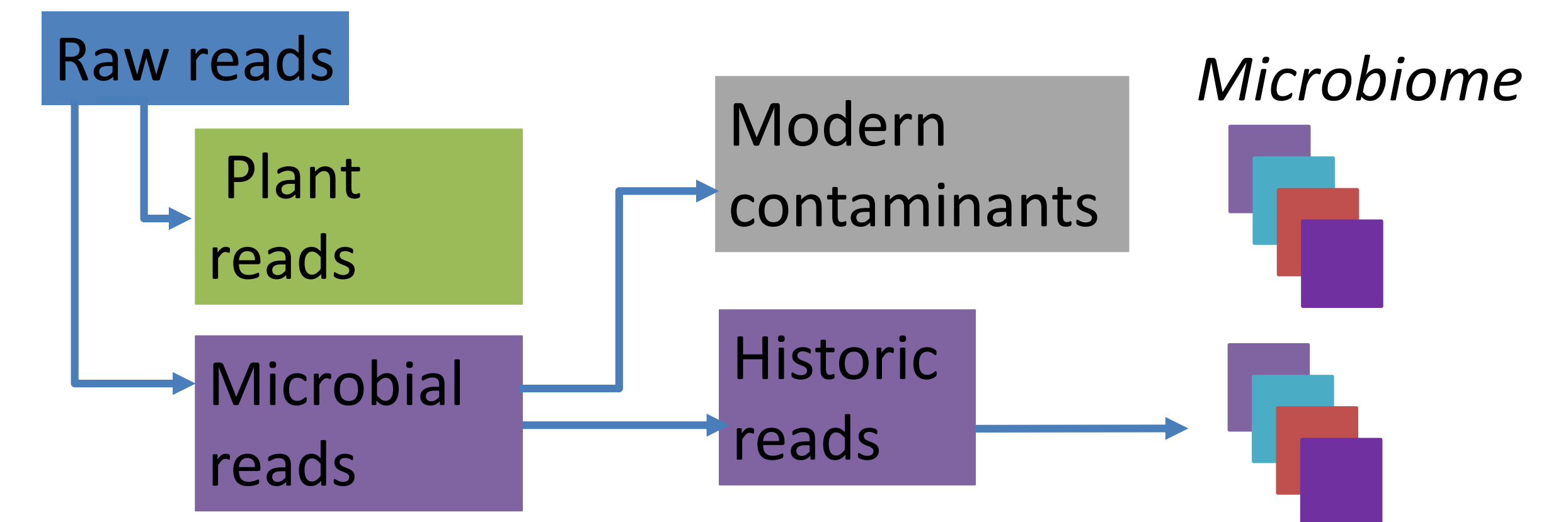
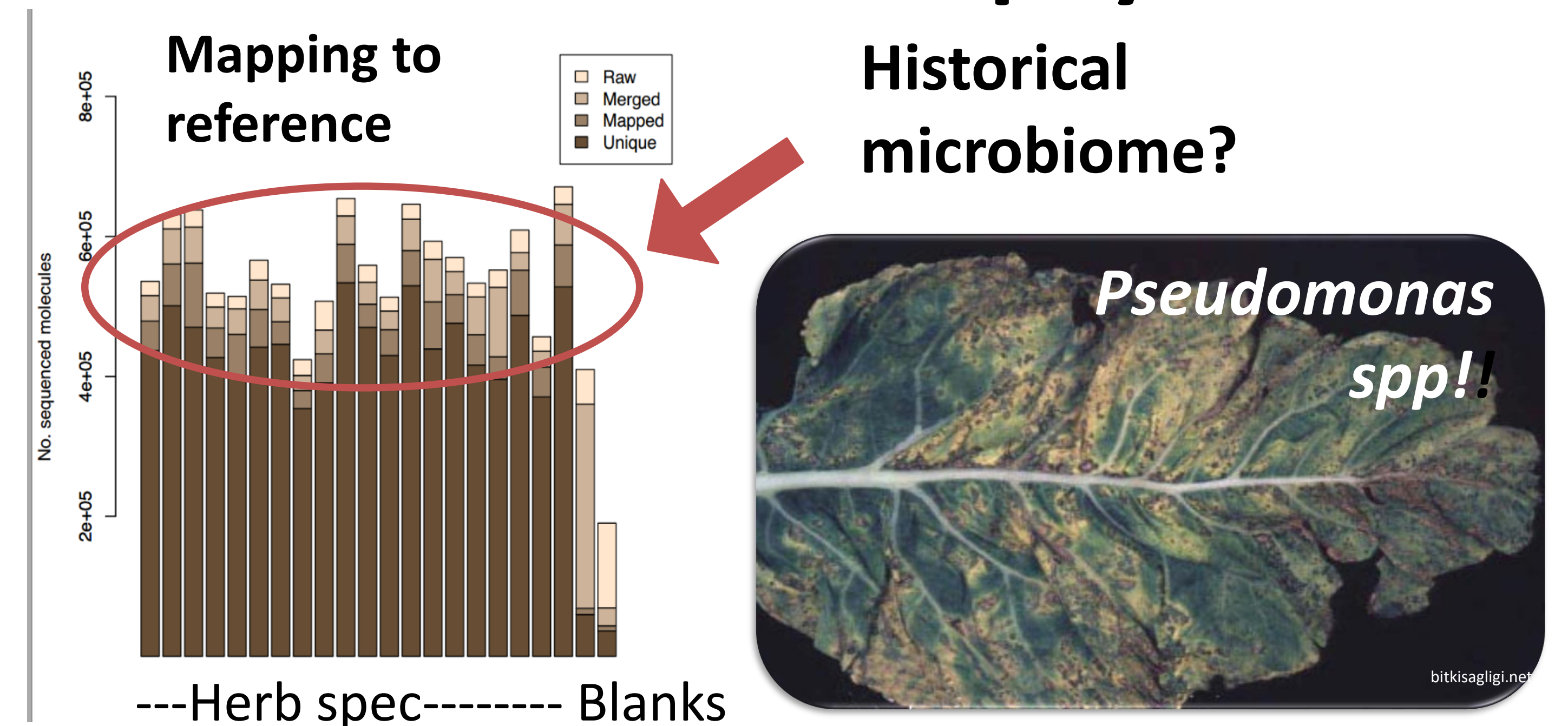
GBIF

Whole genome sequence data!

# of Samples	20
years	1941 - 1993
# of Reads	~192 M
# of Bases	~87 Gb
Avg Quality	37



...in the invader's phytobiome



...in a native foundation species, *Artemisia tridentata*



GEM3
 Genes by Environment
 Modeling · Mechanisms · Mapping



Contact

@ktinvasion

kathryn.g.turner@gmail.com

www.kathryngturner.com